

塑膠押出機械

At the top of extrusion technology

Co-Rotating Twin Screw Extruder
Plastic Recycle System
Shape Profile Extrusion line
Single Screw Extruder



〔總公司〕

台南市六甲區菁埔里5號
Head Office (factory)
No.5, Jingpu VII., Liujia Dist., Tainan City 73444, Taiwan
Tel: 886-6-6986666 Fax: 886-6-6986238
E-mail : cmic@ms24.hinet.net

〔台北公司〕

台北市承德路二段193號7F-2
Taipei Brance Office
Floor 7-2, No. 193, Sec 2 Cheng Der Rd., Taipei, Taiwan.
Tel: 886-2-25571161 Fax: 886-2-25496577
Http://www.continent-machine.com



CONTINENT MACHINERY INDUSTRIES CO., LTD.



公司簡介

世洲機械由董事長周明福先生，創始於1972年。廠房位於台南市六甲區，廠房總面積16,500平方公尺，資本額NTD 2,000萬，員工55人，並相繼成立研發部及品質部，以建立全套之生產系統。並先後取得英國 BSI ISO9001 認證及 C E 認證！

世洲機械廠（股）公司，近40年製造押出機之經驗，全力投入在塑膠的混練製粒機領域中，先後開發成功：積木式雙螺押出機、PVC雙螺桿製粒機、PVC雙/單螺桿製管機、雙螺桿捏合製粒機、超高速單螺桿染色製粒機、再生製粒機、異形材製造機，製板機。經多年研發，已製造出高扭力、高產能、嚙合度良好之押出機。

本公司之產品亦投入國際市場，大陸、日本、南非、美國、墨西哥、歐洲、及東南亞國家，公司成立以來，一直秉持著『客戶第一，務實管理，提升品質，永續經營』的企業理念。我們最大目標是希望能提供給客戶最佳的品質、最快速交期、最合理的價格及最周全的服務。同時並加強員工素質與工作品質的認知，厚植技術基礎，不斷研發新機種及提升技術水平。

我們始終深信『品質是最佳的推銷員』，客戶的肯定正是我們最佳的成就。

 世洲機械廠股份有限公司
CONTINENT MACHINERY INDUSTRIES CO., LTD.



Continent introduction

Continent Machinery was found by Ming Fu Chou at 1972. Company locates at south of Taiwan, Tainan. The land of factory area was 16,500m², capital started with USD 50,000, and 55 employees. We develop strong company structure especially at R&D department and quality control. Machine is under qualify British BSI ISO9001 and CE stander.

Continent has more than 40 years successful manufacture varieties of extruder machine; Co-Rotating Twin Screw Extruder, PVC twin/single screw extruder, High output Single screw extruder, Recycle extruder, Profile extruder and sheet making machine.

We explore global marketing in China, Japan, Thailand, Malaysia, South Africa, Mexico, Greece, American and Asia countries. .



 **CONTINENT**



目次索引 INDEX



- 公司簡介 1
- 工廠介紹 2
- 製粒機
- CM-MTE積木式雙螺桿押出機 5
- CM-PRA/HP超高速染色製粒機 8
- CM-PRD雙段型再生製粒機 9
- CM-PRW薄膜再生製粒機 10
- CM-PRT化纖/水洗膜再生製粒機 11
- CM-PTE PVC平行式雙螺桿製粒機 13
- 周邊配備 14
- 型材
- CM-PTE PVC雙螺桿管材製造機 15
- CM-RPP單螺桿管材製造機 16
- CM-S ABS/PS/PP/PE製板機 17

- Continent introduction 1
- Company profiles 2
- Pelletizer
- CM-MTE Co-Rotating Twin Screw Extruder 5
- CM-PRA/HP High-Output Compounding & Coloring Pelletizer 7
- CM-PRD Double Section Type Recycle Extruder 9
- CM-PRW Clean Films Recycle Pelletizer 10
- CM-PRT PA /PET Fiber / Washed Film Recycling Extruder 11
- CM-PTE PVC Parallel Type Twin Screw Extruder 13
- Down Stream Equipment 14
- Profile
- CM-PTE PVC Twin Screw type Pipe Making Machine 15
- CM-RPP Single Screw type Pipe Making Machine 16
- CM-S ABS/PS/PP/PE Sheet Making Machine 17



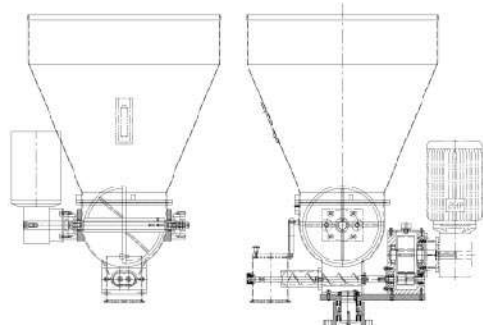
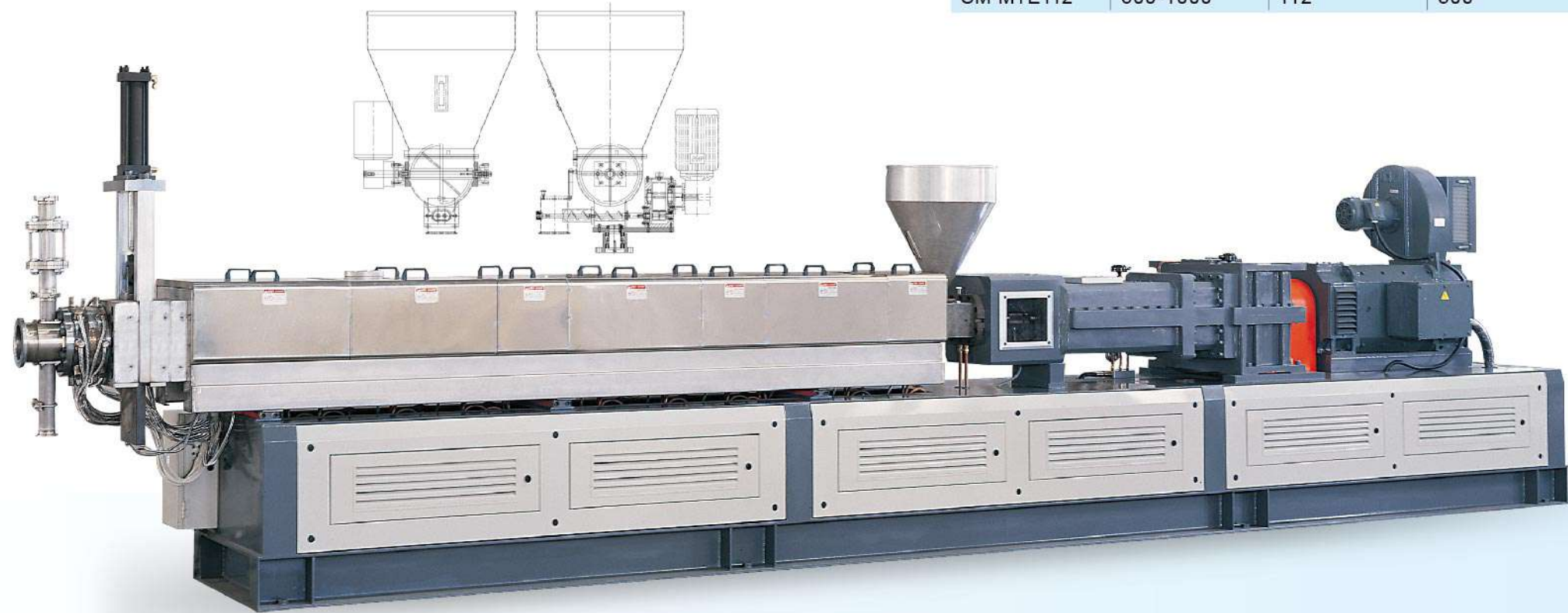
CM-MTE Co-Rotating Twin Screw Extruder

- 螺桿採用積木方式，元件可被快速組合，以符合客戶生產各種不同原料之需求。
- 螺桿以同向旋轉，塑膠原料於料管內經由高速高剪切而獲得更佳之分散性及混練效果。
- 應用：高濃度色母、黑色及白色色母、填充、改質、改性，強化、聚合、反應、分散、合金等。

- Screw elements can be arrange for different resin characters.
- Twin screw is co-rotating. Resin result excellent quality through high share in dispersion and mixing.
- Application: Concentrate masterbatch, black/white Materbatch, filler, compounding, color materbatch.

機型介紹/Description

Model	Driving motor (HP)	Diameter	Maximum RPM
CM-MTE31	30	31	600
CM-MTE45/47	30~100	45/47	360/600
CM-MTE58	125-175	58	400/600
CM-MTE72	150-300	72	400/600
CM-MTE75	170~300	75	300
CM-MTE77	250-400	77	400/600
CM-MTE92	300-700	92	600
CM-MTE112	600-1000	112	500



螺桿元件/Screw elements :

混合元件
Mixing element



捏合元件
Kneading elements

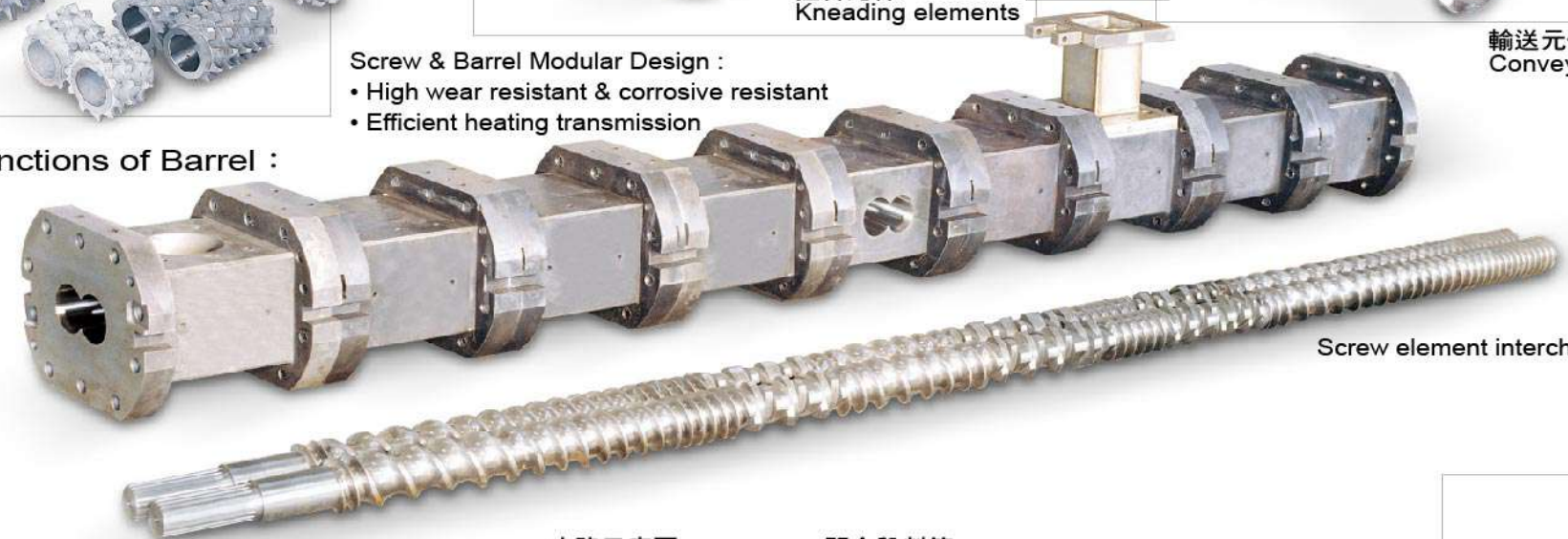


輸送元件
Conveying screw element

Screw & Barrel Modular Design :

- High wear resistant & corrosive resistant
- Efficient heating transmission

料管種類/Functions of Barrel :



Screw element interchangeable

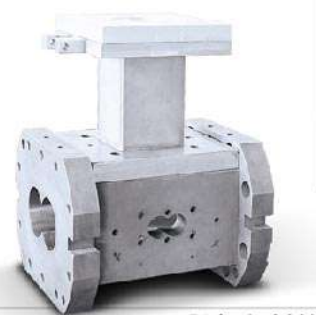
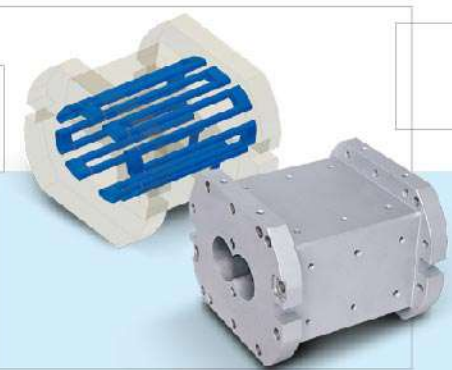
雙合金料管組裝圖
Bimetallic Barrel
雙合金內襯套
Inject bimetallic barrel



水路示意圖
Water circulation

閉合段料管
Close type

側面進料段料管
Side feeder



脫氣段料管
Venting zone



進料脫氣料管
Feeding zone

CM-MTE 積木式同向雙螺桿押出機 + 刮除式換網機

CM-MTE 系列



- 適用範圍:連續式新料及回收料生產
- 生產過程中無需因換網停機、重新拉條
- 本套設備適用於PP, PE, ABS, PA等塑料回收
- 刮除式換網機最細可配上100目濾網
- 濾網使用壽命約在1500 ~ 3000小時
- 本套設備每小時產能約在600~1000kg
- 高脫揮發氣體處理裝置

- Suitable for: Continuous production of virgin material and recycling
- Avoid stopping of extruder and re-making of strain due to filter changing
- Suitable for PP, PE, ABS, PA recycling
- Laser filter with maximum 100 mesh filter screen
- Filter screen with life time around 1500 ~ 3000 hours
- This setup is with capacity of 600 ~ 1000kg/hr
- With high capacity vacuuming device



- 低溫高混練的單螺桿押出機
- 創新的螺桿設計提供了良好的分散效果及混練效果,其產量更多出一倍。
- 料管的真空脫氣孔更可將塑料在熔融過程中所產生的瓦斯等揮發性氣體排除,以保持塑料的良好品質。
- 齒輪箱內部特殊設計,藉著強制潤滑和精密研磨增加齒輪的壽命。
- 採用鋁製加熱片穩定的溫控加熱並節省用電量。
- 應用:適用原料 ABS, PP, PE, ABS/PC, PBT, PA 之塑膠原料之染色。

- Low temperature high dispersion single screw extruder
- Special screw design gives high dispersion, kneading, and mixing in double output. Barrel equips vacuum venting system which withdraws moisture and gas from melting resin.
- Ensure the pellets in excellent quality.
- Inner of gear box equips force lubrication oil system and high grinding gears for longer life using.
- Aluminum heater provides stable heating and saving power consumption,
- Application: suitable materials ABS, PP, PE, ABS/PC for coloring and compounding.



CM-PRA/HP CM-PRA/HP 超高速塑膠染色製粒機



機型介紹/Description

Model	Driving motor (HP)	Screw Diameter (mm)	L/D of Screw	Output* (kg/hr)
CM-PRA/HP 75	50	75	34~36	150~200
CM-PRA/HP85	100~120	85	34~36	200~300
CM-PRA/HP100	150~200	100	36	350~500
CM-PRA/HP120	175~250	120	36	500~650



CM-PRD 雙段型再生製粒機 **CM-PRD**



CM-PRD Double Section Type Recycling Extruder

■ CM-PRD系統的主要特性:

1. 自動油壓換網可迅速而方便去除雜質。
2. 控制面板位於主機旁，操作更簡易。
3. 加壓漏斗所產生的適當壓力，可以將粉碎料順利地壓入押出機。
4. 原料的回收形狀：薄膜，粉碎塊狀料及碎片
5. 適合回收以下乾淨回收原料：PP/HDPE/LDPE/ABS/PS/PC/POM/PA/PMMA/PBT (不含PVC)

■ CM-PRD main feature:

1. Automatic hydraulic screen changer takes out dirties from pellets.
2. Control panel sets beside the main extruder for easy operation.
3. Strong forced feeder creates suitable strength to force crushing film feed into the extruder line.
4. Recycling shape of material: Film (shopping bags) Lumps and Scrap
5. The following materials are suitable for recycling:
PP/HDPE/LDPE/ABS/PS/PC/POM/PA/PMMA/PBT (Not including PVC)

■ 機型介紹/Description

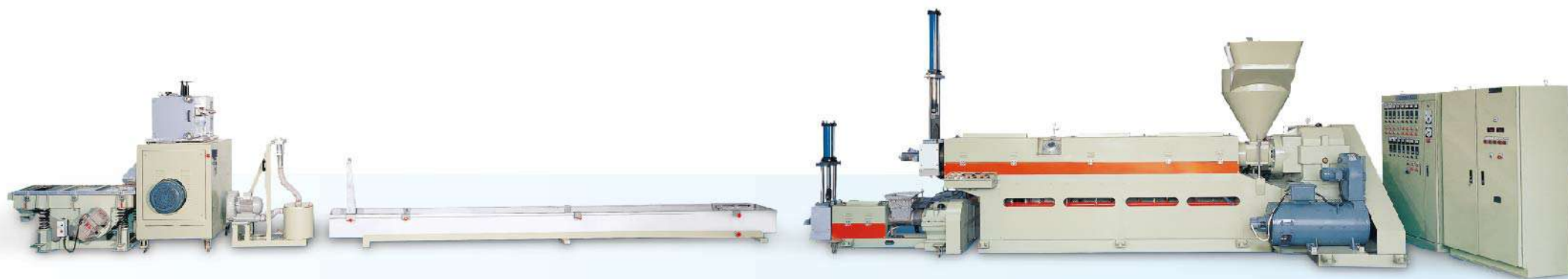
第一段押出機/First Section Extruder

Item	Model	CM-PRD 85	CM-PRD100	CM-PRD120	CM-PRD150
Screw Diameter (mm)		85	100	120	150
L/D of Screw		28~32	28~32	28~32	28~32

第二段押出機/Second Section Extruder

Screw Diameter (mm)		95	105	125	155
L/D of Screw		8	8	8	8
Output* (kg/hr)		80~160	100~260	180~350	250~450

押出機產量依原料物性而定
Output range depends on material feature



CM-PRW 三機一體薄膜回收製粒機



CM-PRW Clean Films Recycle Pelletizer

■ 機型介紹/Description

Model	Driving motor (HP)	Screw Diameter (mm)	L/D of Screw	Output* (kg/hr)
CM-PRW 85	60	85	36(VENT TYPE)	120~220
CM-PRW100	100	100	36(VENT TYPE)	180~380
CM-PRW120	125	120	36(VENT TYPE)	200~500

■ CM-PRW系統的主要特性:

1. 自動送料及儲料。
2. 藉由燒結桶馬達之負載電流來控制定量進料。
3. 自動送料以節省人力。
4. 三機一體提供有效的預先粉碎，預切、預熱、混合、乾燥、押出及切粒，全在此設備同時完成。
5. 燒結桶壁外有風冷卻系統來控制恆溫。
7. 適合回收以下乾淨回收原料：HDPE/LDPE/LLDPE/PP/EVA (不含PVC)
8. 原料的回收形狀：薄膜(購物袋)，纖維/細絲/紗，塑膠繩，軟的EVA樹脂

■ CM-PRW main feature:

1. Automatic Feeding and storage of materials.
2. Shredder equips motor current which feed into raw material evenly.
3. Automatic conveying saves labor costs.
4. The CM-PRW gives efficient pre-cutting, pre-heating, mixing, drying air, extruding and cutting simultaneously.
5. The shredding drum has an air cooling system and temperature stable.
6. Recycling clean materials: HDPE/LDPE/LLDPE/PP/EVA (Not including PVC)
7. Recycling Shape of Materials: Films (Shopping bags), Fibers/Yarn/Non-woven, plastic rope, soft Eva Resin

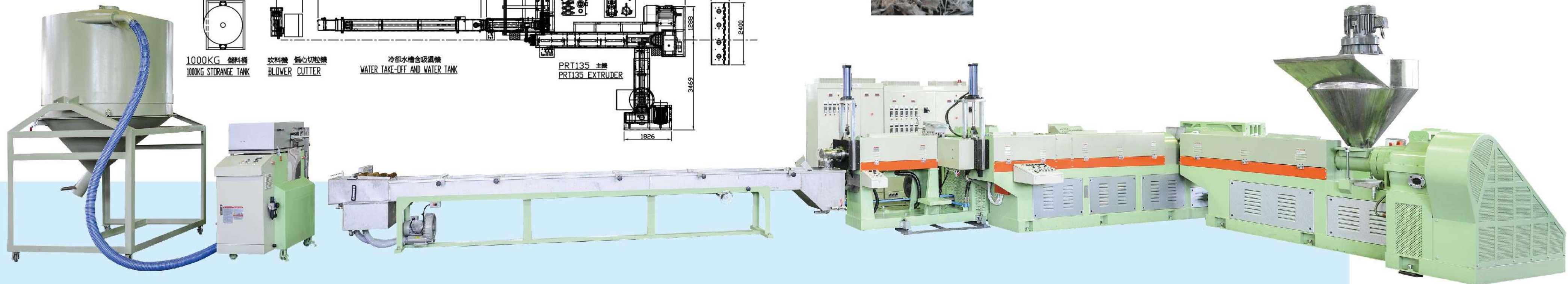
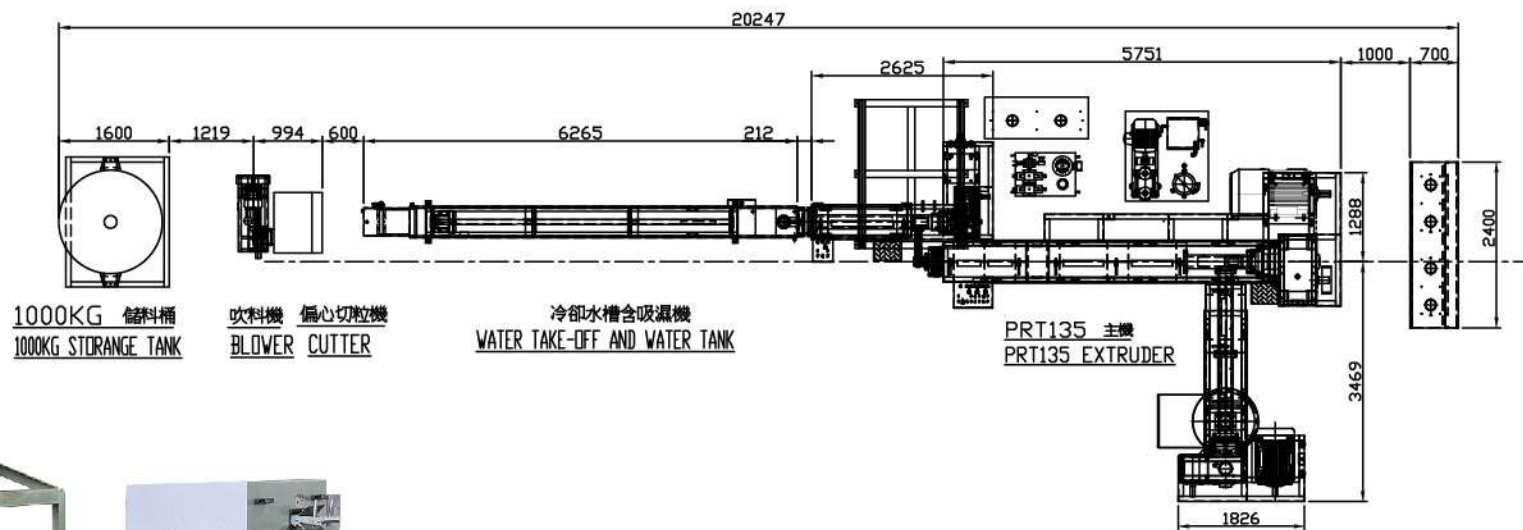
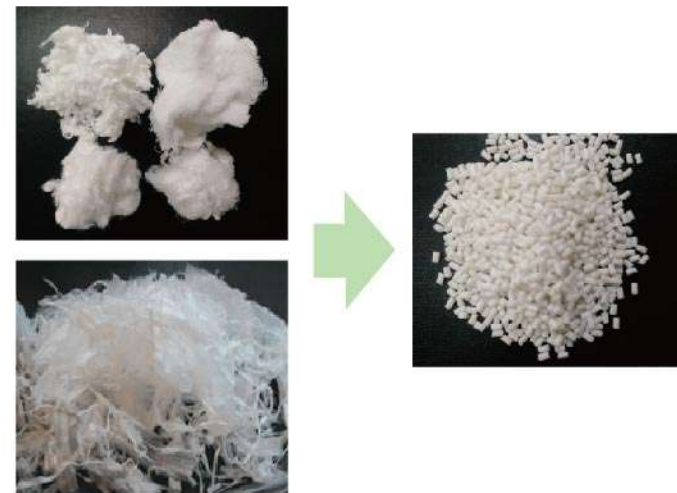


CM-PRT 135 化纖/水洗膜再生製粒機 **CM-PRT**

CONTINENT MACHINERY CM-PRT 135 PA/PET Fiber /Washed Film Recycling Machine

- 適用原料: PA/PET化纖、PP/PE薄膜
- 側邊強壓入料，有效排除水份、提高機台產量
- 化纖含水量5%-10%可生產
- 水洗膜含水量5%-10%可生產
- 可做L或Z形配置
- 產能200 ~ 300公斤/小時

- Workable Material: PA/PET fiber; PP/PE film
- Side Forced feeder to remove water and increase productivity
- Able to deal with fiber contain 5% ~ 10% water
- Able to deal with film contain 5% ~ 10% water
- Can be setup in L or Z shape
- Output: 200 ~300 kg/hr



CM-PRT CM-PRT 135 化纖/水洗膜再生製粒機

CM-PRT 135 PA/PET Fiber /Washed Film Recycling Machine **CONTINENT MACHINERY**

機型介紹/Description PRT 135 Recycling extruder

	Side Force Feeder 側押入料機	Main Extruder 主押出機	Sub-Extruder 子押出機
Driving Motor	100	150 HP	60 HP
Screw Diameter	160 mm	135 mm	150 mm
Screw L/D	12	32	12
Output	200 - 300 Kg/hr		

Output quantity depends on the conditions of material

CM-PTE PVC異向平行式雙螺桿製粒機

CM-PTE PVC



CM - PTE PVC Counter-Rotating Parallel Type Twin screw



- 齒輪箱：採用強制潤滑，齒輪二級研磨，可承受高扭力，運轉時噪音小，壽命長。
- 溫控系統：採用PID和電腦控制，可得到精確的設定值。
- 冷卻系統：料管冷卻採用油冷或水冷。螺桿溫控可採用油溫機來控制
- 異向旋轉雙螺桿經過特殊設計，混練效果較佳。
- 適用原料：U-PVC、HI-PVC、C-PVC、PVC軟質、PVC硬質、PVC發泡、PVC透明料、PVC醫療級透明料。

- Gearbox: Forced lubrication system, gear second-grade grinding, high torque, low noise, and longer life using.
- Heating system: PID and computer control for accurate temperature setting value.
- Cooling system: Barrel is cooling by oil or water. Screw temperature control by oil circulation controller.
- Counter-rotating screw special design gives excellent mixing and kneading effect.
- Application: U-PVC, HI-PVC, CPVC, soft PVC, rigid PVC, foamed PVC, transparent PVC, medical grade PVC.

機型介紹/Description

Model	Driving motor (HP)	Screw Diameter (mm)	L/D of Screw	Output* (kg/hr)
CM-PTE 77	50	77	18~24	150~300
CM-PTE 95	75	95	18~24	350~600
CM-PTE 130	175	130	18~24	700~1200



Down Stream Equipment

CM-MTE系列



儲料桶
Silo



震動篩選機
Pellets vibrated strainer



除濕機
Water take-off unit



刮除式過濾網
Laser Filter



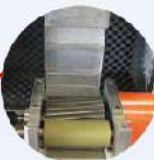
側供料
Side feeder



比例式餵料器
Proportion type feeder



偏心切粒式機
Bias center type strand pelletizer



自動油壓換網裝置
Auto. Hydraulic screen changer

CM-PTE PVC 雙螺桿管材製造機 **CM-PTE PVC**



CM-PTE PVC Twin Screw type Pipe Making Machine

- 本設備經由押出主機之螺桿不同之設計，可生產PVC、ABS、PP、PE硬質管。
 - 產品適用在建築及冷熱水管，可耐高溫。
 - 可配合不同的管徑尺寸，可設計抽單管或一次抽雙管。
- Extruder design in different raw material PVC, ABS, PP, PE rigid pipe.
 ■ Pipe can be use in build structure and endure high temperature.
 ■ Extrusion in double pipes.



機型介紹/Description

Model	Driving motor (HP)	Screw Diameter (mm)	L/D of Screw	Output* (kg/hr)	Inch
PTE 68	30	68	18-24	100-160	4"×5"×6"
PTE 75	50	75	18-24	120-180	5"×6"×8"
PTE 95	75	95	18-24	150-250	6"×8"×10"×12"
PTE 130	125	130	18-24	230-350	12"×14"×16"



CM-RPP 單螺桿管材製造機



CM-RPP Single Screw type Pipe Making Machine

機型介紹/Description

Model	Driving motor (HP)	Screw Diameter (mm)	L/D of Screw	Output* (kg/hr)	Output Diameter (mm)
RPP 45	15	45	24-26	10-25	4-8mm
RPP 65	25	65	24-26	25-50	10-20mm

- 本設備經由出主機之螺桿不同之設計，配合冷卻水槽、兩輪式引取切斷機。在切斷機後，可依不同產品需求，增購輸送積載架或捲收機。
 - 產品適用PS、PP醫療用棒、PVC醫療管、棉花棒、壓克力管、原子筆筆芯。
- Extruder connects with water cooling tank, roller type haul-off unit, cutter and winding machine or discharge Unit.
 ■ Suitable production: PS, PP, PVC medical tube, cotton swabs, Acrylic tube, Cartridge.



CM-S 製板機



ABS/PS/PP/PE Sheet Making Machine

機型介紹/Description

Model	Driving motor (HP)	Screw Diameter (mm)	L/D of Screw	Output* (kg/hr)	Thick
CM-S850	75-100	85	32-36	150-180	0.5-5 m/m
CM-S1250	200	100	32-36	200-350	0.5-5 m/m
CM-1350	250	120	32-36	300-500	0.5-5 m/m

- 製板機可應用於真空成型之製品，如冰箱內襯板，手提箱，文書夾，冰淇淋杯等。
- 押出量：會依塑料和厚薄度的不同會有差異。
- TPE發泡板材的生產。

- The sheet machine applies in vacuum formation products; refrigerator inner board, suitcase, folder, and ice cup, etc.
- Extruder output depends on sheet thickness.
- TPE foam sheet production.

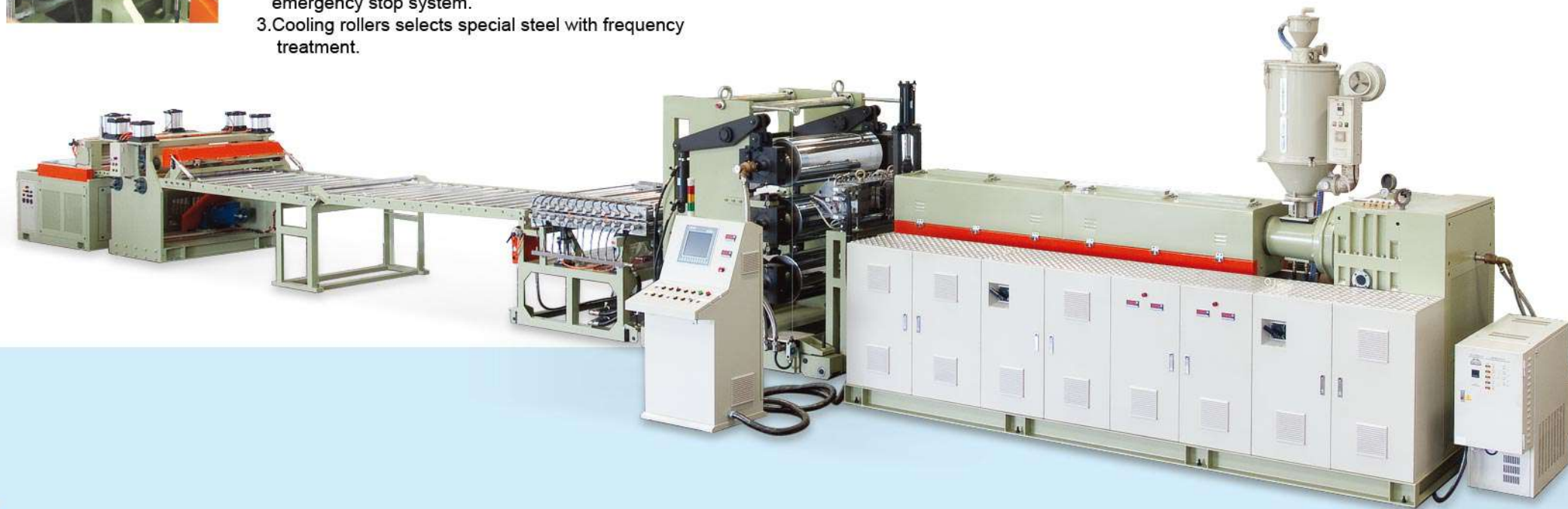


三本滾輪的特點

- 滾輪表面鍍鉻和精度研磨依產品需求。
- 滾輪搭配全罩式安全斷電和緊急停止系統。
- 冷卻成型滾輪，選用特殊高鋼性材質，中週波熱處理。生產中不易變形，壽命長。

3rd roller features

- Each roller has hard surface polishing with mirror chrome plating.
- Roller equips automatic power off switch and emergency stop system.
- Cooling rollers selects special steel with frequency treatment.



CM-S 製板機-三層不同塑料共押成型製板機



Sheet Making Machine with Co-Extrusions.

- 三層共押，分流模可分上層、中層、下層，上層與下層可依塑料需求厚度，調整流量。
- 模流調整可分：流道微調，模口微調，操作更方便。
- 電源接頭採易拆式歐規系統，拆裝更方便。
- Internal compound Die designs in three flow channels, upper, middle, and lower mold. Thickness can be adjust by upper and lower mold.
- T-Die Head adjusts easily by flow channel and Die Lip.
- Electrical power plug is in Europe Stander.



- 三層不同塑料共押成型，可使產品提高附加價值。
- 可依需求貼合不同材質，纖維，使產品更具競爭力。例：尼龍布，防水布，毛巾布，內面襯料，網狀布及其它纖維
- 左右共押機前進，後退馬達傳動，操作更方便。
- 自動切斷機採微電腦控制，切斷精準，並搭配張力控制器。

Extruder with other two co-extrusions produces three different raw materials for high value products. Attach with different material of layer, such as nylon fabric, water proof, towel, inner textile. Co-Extrusion moves forward and backward with easy operation. Automatic cutter is computer control with accurate cutting.